

OWNER'S MANUAL

**TRACER**

**PRO** 1/10 Scale Brushless  
2WD RTR RC Buggy

**ATREK**

# WARNING SYMBOLS AND THEIR MEANINGS + GENERAL WARNINGS

Throughout this manual, the following terms and symbols highlight important safety information:

## **WARNING**

Indicates a risk of serious injury or significant damage if instructions are not followed.

## **CAUTION**

Indicates a risk of minor injury or property damage if instructions are not followed.

## **NOTICE**

Highlights important information to avoid damage to the product. Not related to personal injury.

## **WARNING – SAFETY PRECAUTIONS**

This is a high-performance RC vehicle and **NOT A TOY**.

Please read and understand this manual fully before use and follow all safety guidelines.

- Atrek vehicles are not suitable for children under 14 years of age.
- Keep all chemicals, small parts, and electrical components out of reach of children.
- Operate only in safe, open areas, well away from people, animals, traffic, and obstacles.
- Avoid wet or dusty environments. Water can damage electronics, and dust may cause mechanical issues.
- Do not touch moving parts while the vehicle is powered on.
- Keep fingers, hair, and loose clothing away from rotating components.
- Always turn on the remote first, then the car. When finished, turn off the car first, then the remote.
- Keep the wheels of the model off the ground when checking the operation of the radio equipment.
- Never operate your model with low transmitter batteries.
- Store all batteries in a suitable cool, dry place, away from heat sources, open flames, and direct sunlight.
- Never modify electronics or use non-approved parts. Doing so may cause malfunction or fire.

## **WARNING – BATTERY SAFETY**

- Never leave charging batteries unattended.
- Do not charge overnight or while sleeping.
- Never exceed the battery's discharge rating.  
Example: A 4.0Ah (4000mAh) battery with a 35C rating has a continuous discharge limit of 140A (4.0 × 35).
- Never discharge below 3.0V per cell. Doing so can permanently damage the battery and increase fire risk when recharging.
- Never charge the battery inside the model. Always remove the battery before charging.
- Only use a compatible charger and correct settings for your battery type (e.g., LiPo).
- Never allow children to charge batteries unsupervised.
- Do not disassemble, crush, or puncture any battery pack.
- Always disconnect the battery when not in use.
- Stop charging immediately if the battery becomes hot, swollen, or emits smoke.
- Always charge in a fire-safe area, away from flammable materials, and on a non-flammable surface.

## **WARRANTY OVERVIEW**

Your Atrek vehicle comes with a 6-month limited warranty covering defects in parts, materials or workmanship. This means we will repair or replace faulty parts at our discretion, subject to local laws. However, this warranty does not cover:

- Damage from crashes, impacts, or rough handling.
- Wear and tear on parts such as tires, gears, and suspension components.
- Modifications, unauthorized repairs, or exposure to water.
- Improper maintenance or battery misuse.

**Important:** To file a warranty claim, contact the retailer where you purchased your Atrek RC car with your proof of purchase. Do not return the vehicle without approval. For more information, please see the back of this manual, or visit [atrekrc.com.au/warranty](http://atrekrc.com.au/warranty).

# CONGRATULATIONS ON YOUR NEW ATREK RC!

You're now part of an exciting community of RC enthusiasts who thrive on speed, performance, and fun! Whether you're a beginner or a seasoned driver, this manual will help you get the best experience from your Atrek vehicle. Take a moment to read through these instructions to get the most out of your Atrek.

If you need support, our team is always here to help.

*Welcome to the Atrek family!*

**NOW, LET'S GET STARTED!**

## CONTENTS

General Warnings.....	1
Welcome and Contents.....	2
What Comes in the Box.....	3
Charging and Battery Care.....	4
Getting Started.....	5
How to Drive.....	6
After Use Maintenance.....	7
Troubleshooting.....	7
Transmitter Information.....	8
ESC Information.....	9
Parts Diagram.....	10
Warranty.....	11

# WHAT COMES IN THE BOX



- ① Atrek Tracer Pro 1/10 Scale Brushless 2WD RTR RC Buggy
- ② 2.4GHz Transmitter
- ③ 4000mAh 7.4V LiPo Battery Pack
- ④ Charger
- ⑤ Tool Kit and Spare Parts
- ⑥ High Speed Pinion Gear\*
- ⑦ 4x AA Batteries

**NOTE:** Components subject to change.

**\*IMPORTANT:** When using the supplied optional pinion for top-speed running, limit your driving to smooth surfaces only, while monitoring component temperatures closely. Running in grass and off-road could cause excessive loads on the electrical system in the model, and may void vehicle warranty.

# CHARGING AND BATTERY CARE

## **⚠ WARNING: BATTERY SAFETY & HANDLING**





- Only use the charger provided with your Atrek vehicle. Improper use of third-party chargers can result in battery failure or fire.
- Never leave the battery unattended while charging.
- Charge in a fire-safe area away from flammable materials.
- Do not expose the battery to water, extreme heat, or direct sunlight.
- Inspect the battery before each use. If you notice swelling, punctures, or any damage, discontinue use immediately. Dispose of battery immediately via appropriate local regulations.

## **HOW TO CHARGE THE BATTERY**

Your awesome new Atrek vehicle ships with the battery installed in its battery compartment for safety during transit.

**⚠ WARNING:** Please remove the battery from the vehicle before charging, and never charge the battery with it still in the car.

1. Connect the charger to a power source.
2. Plug the battery into the charger. The connectors should fit easily – do not force them. The included charger is compatible with both 2S and 3S LiPo batteries. The included battery is a 2S. Plug it into the 2S charging port on the left side of the charger.
3. Monitor the charging status:

-  Flashing Green LED: Ready to charge.
-  Solid Red LED: Charging.
-  Solid Green LED: Charged.
-  Flashing Red LED: Error - Check battery condition\*

4. Unplug the battery from charger, and charger from power supply once charging is complete. Overcharging can damage the battery.
5. Ensure the battery is cool before use or charging. A hot battery may cause performance issues.



\* **Error:** Voltage out of charging range. If this is reoccurring your battery pack may be damaged and need replacing.

# GETTING STARTED

## TRANSMITTER BATTERY INSTALLATION

- Open the battery compartment on the back of the transmitter.
- Insert 4 AA batteries, ensuring correct polarity.
- Close the battery cover securely.
- The LED indicator should light up when the transmitter is turned on. If it flashes, replace the batteries.



## VEHICLE BATTERY INSTALLATION

Insert the battery pack into the vehicle's battery compartment in the same way it was removed, making sure to fasten the hook and loop straps for safety.



## SPEED SETTINGS:

**ⓘ IMPORTANT:** Your Atrek comes from the factory with the speed setting at 100%. Change to low speed immediately for inexperienced users.

- Low Speed (50%) - Recommended for beginners.
- High Speed (100%) - For experienced users.

## TO CHANGE BETWEEN SPEED SETTINGS:

With transmitter switched off - Hold down the channel 4 button while turning the steering wheel all the way left, then switch on the transmitter. The green LED should flash twice.

**Repeating this process will return the transmitter to high-speed mode.**



# HOW TO DRIVE

## STEERING



Straight



Turn Left



Turn Right

## ACCELERATING



Neutral



Accelerate (Pull)



Brake/Reverse (Push)

- **TO REVERSE AFTER BRAKING, RETURN THE TRIGGER TO NEUTRAL, THEN PUSH AWAY AGAIN.**

### ⓘ NOTICE

All Atrek Vehicles have Proportional Controls. That means that the more you pull the trigger, the faster the car will go. The more you steer, the more the car will turn. The car's movements are proportional to your inputs.

### ⓘ NOTE

Before every drive, quickly check the tightness of your Atrek vehicle's wheel nuts, using the included wrench.

## FIRST SWITCH ON THE TRANSMITTER, THEN THE VEHICLE.

1



2



### ⚠ IMPORTANT

Always turn on the remote first, then the car.

*That's it! You're ready to go for your first drive with your new Atrek! Enjoy!*

# AFTER USE MAINTENANCE

## Power Down Safely

Turn off the car first, then the transmitter.

## Disconnect and Remove Battery

Unplug the battery and remove it from the vehicle.

Never store the battery while connected.

## Inspect for Dirt and Debris

Check for build-up in and around the wheels, suspension, and drivetrain. Dirt can affect performance and wear down components over time.

## Clean the Vehicle

Use compressed air or a soft brush to clean the chassis and moving parts. If the car is damp, wipe it down with a dry cloth—never store it wet.

## Check for Damage or Wear

Inspect the vehicle for cracked, damaged, or worn-out parts. Replace anything that looks compromised to avoid issues during your next drive.

## Inspect Electrical Wiring

Check all wires for signs of damage, fraying, or exposed insulation. Damaged wiring can lead to performance issues or short circuits.

## Ensure Free Movement

Gently move all suspension arms, steering components, and drivetrain parts to make sure they move freely without binding or resistance.

## Inspect Gears and Drivetrain

Look over the gears and drivetrain for signs of wear, damage, or debris - especially after running on rough or dirty terrain.

## Tighten Loose Screws and Nuts

Go over the vehicle and check for any loose screws or hardware. Pay special attention to wheel nuts; they should be firm but not overtightened.

## Store Correctly

Keep your RC car and battery in a cool, dry location, away from direct sunlight and moisture. For LiPo batteries, store at a safe storage voltage if not using them for an extended period.

# TROUBLESHOOTING

## Car Won't Move?

- Ensure both the remote and car are powered on.
- Check that the battery is properly connected and fully charged.
- Inspect wiring and connections for any damage.
- Remove any debris stuck in the drive train.
- Ensure gears are not worn or stripped.

## Car is Slow?

- Battery may be low—recharge it.
- Check if the speed switch is set to low mode.
- Remove any debris stuck in the drive train.
- Ensure gears are not worn or stripped.

## Transmitter not Responding?

- Check and replace transmitter batteries if low.
- Ensure the transmitter and car are properly bound.

By following these steps, you'll maximize the performance and lifespan of your Atrek vehicle. For further information, tips and advice, visit our website [atrekrc.com](http://atrekrc.com) or contact our support team.

# TRANSMITTER INFORMATION



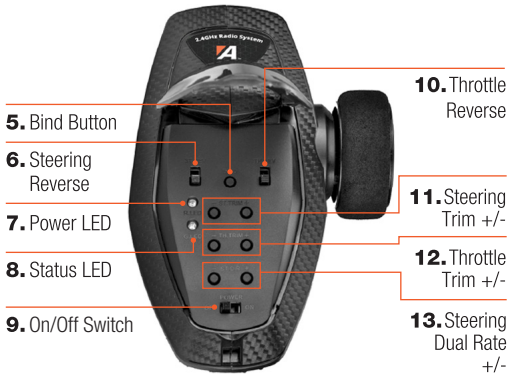
1. Steering Wheel

3. Channel 3 Switch

4. Channel 4 Switch

2. Throttle/  
Brake Trigger

- 1. Steering Wheel:** Controls left and right movement of the car.
- 2. Trigger (Throttle/Brake/Reverse):**
  - Pull to accelerate forward.
  - Push forward to brake
  - To reverse after braking, return the trigger to neutral, then push away again.
- 3. Channel 3 Switch:** Controls Channel 3 of the receiver. Unused; upgrade-ready.
- 4. Channel 4 Switch:** Controls Channel 4 of the receiver. Unused; upgrade-ready.
- 5. Bind Button:** Puts the transmitter into binding mode.
- 6. Steering Reverse Switch:** Reverses the steering channel direction if needed.
- 7. Power LED:** Illuminates solid red when the transmitter is powered on. Flashes red if transmitter battery level is too low.
- 8. Status LED:** Used to indicate mode changes and programming.
- 9. On/Off Switch:** Turns the transmitter on or off.
- 10. Throttle Reverse Switch:** Reverses throttle channel direction if required.  
**⚠ Caution:** May cause vehicle runaway.
- 11. Steering Trim +/-**
- 12. Throttle Trim +/-**
- 13. Steering Dual Rate (D/R):** Adjusts the amount of steering angle. The first thing to check if the car is not responding to steering channel inputs.



5. Bind Button

6. Steering  
Reverse

7. Power LED

8. Status LED

9. On/Off Switch

10. Throttle  
Reverse

11. Steering  
Trim +/-

12. Throttle  
Trim +/-

13. Steering  
Dual Rate  
+/-

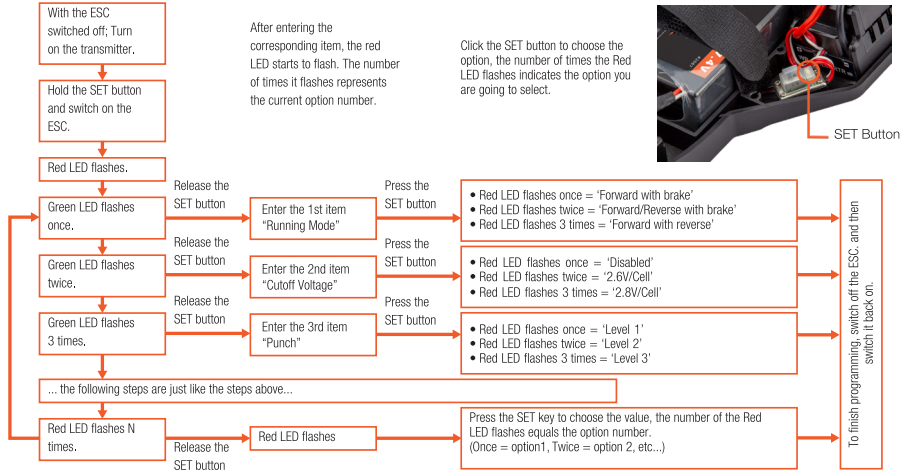
For further information about your transmitter, refer to its specific owner's manual.

# ESC INFORMATION

Your Atrek vehicle is equipped with a high performance, latest-generation, 2-3S LiPo capable, 60A brushless ESC.

**⚠ WARNING:** Your Atrek vehicle's ESC is set up from the factory with the perfect balance of performance and reliability. ESC parameter tuning should only be approached by experienced RC users.

## Program your ESC with the SET Button next to the power switch



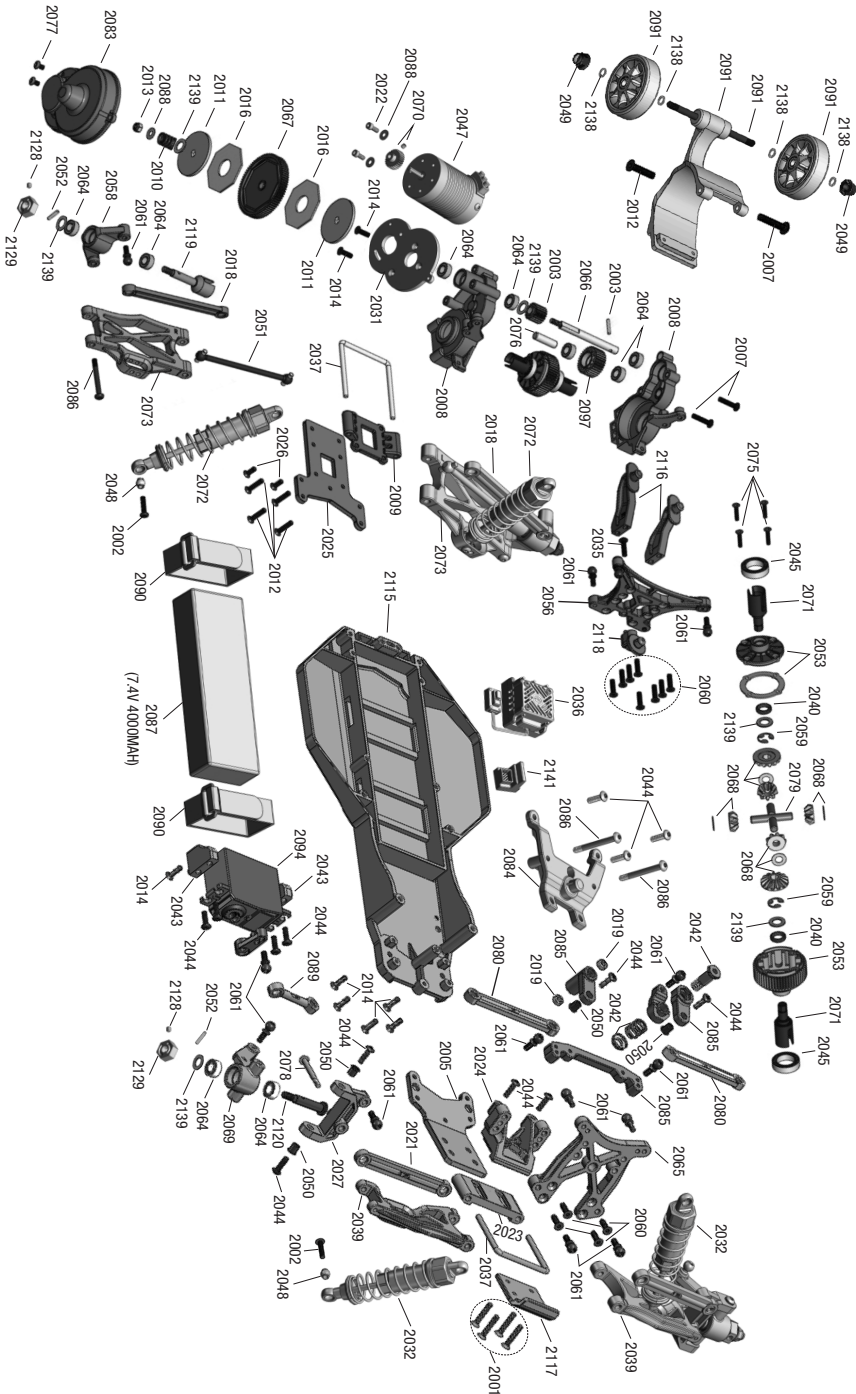
### Note:

- In the programming process, the motor will emit a 'Beep' tone when the LED is flashing.
- A long flash and long 'Beep' represents number '5' for easy identification of the large number.  
 'A long flash' (Motor makes a long 'Beep' sound = the No. 5 item is selected  
 A long flash + a short flash' (Motor makes a long 'Beep' + a short 'Beep' sound = the No. 6 item is selected  
 A long flash + 2 short flashes' (Motor makes a long 'Beep' + 2 short 'Beep' sounds = the No. 7 item is selected  
 A long flash + 3 short flashes' (Motor makes a long 'Beep' + 3 short 'Beep' sounds = the No. 8 item is selected

The orange cells in the following table are the default values of the programmable items.

Item	Option 1	Option 2	Option 3	Option 4	Option 5	Option 6	Option 7	Option 8
1 Running Mode	Forward with brake	Fwd/Rev With Brake	Forward with reverse					
2 Drag Brake Force	0%	5%	10%	15%	20%	25%	30%	40%
3 Cutoff Voltage	Disabled	2.6V/Cell	2.8V/Cell	3.0V/Cell	3.2V/Cell	3.4V/Cell		
4 Punch	Level 1	Level 2	Level 3	Level 4				
5 Max. Brake Force	25%	50%	75%	100%				

# PARTS DIAGRAM



# WARRANTY INFORMATION

## Atrek Limited Warranty

Thank you for choosing an Atrek product. This is not a toy and not recommended for persons 14 years of age and under. Minors should be under the supervision and guidance of an adult. It is the responsibility of parents, guardians and the purchaser to ensure minors are given the appropriate guidance, training and supervision prior to and during use.

To ensure you have complete confidence and the best experience, all Atrek RTR RC vehicles are sold with up to 6-months limited warranty, available from date of purchase with proof of receipt\*, which assures that the item is free of defects in parts, materials and workmanship ("limited warranty").

This limited warranty is offered at the discretion of Atrek in compliance with relevant local consumer law. Please read and understand this information to avoid invalidating the terms of the limited warranty.

## IMPORTANT USER GUIDELINES

- **It is important for the user to understand all warnings**, limitations and risks associated with the use of Atrek products prior to first charge or, first use. Use of this product in any form indicates acceptance and understanding of these risks.
- **Safe operating zone:** It is important to ensure others are free from risk when operating your Atrek products by establishing a safe operating zone.
- **Parental responsibility:** It is the responsibility of parents or guardians to provide appropriate guidance and supervision to minors using or working on this product.
- **Product care:** This is a high-performance RC model and must be treated with care and respect.

## USER MANUAL AND MAINTENANCE

The instruction manual contains information required to operate the product. Additional support such as interactive exploded parts diagrams are also available online at [atrekrc.com](http://atrekrc.com).

Atrek makes RC products that are strong and durable. However, due to the adventurous nature of RC hobbies, it is possible to break or damage your Atrek through extreme use, accidental

damage, crashing or misuse. Therefore, some components parts are not covered by warranty, unless DOA. Clutch pads, brakes, bearings, drive gears and tires, are consumable items and will wear with use. Extreme or frequent use, and or use in adverse conditions will increase wear. Always check these parts before and after use and replace them as needed. Maintaining and servicing an RC is part of the hobby. Modifying your Atrek with Atrek performance parts or non-genuine upgrades may place additional strain on your Atrek which will impact your warranty. As with any modification, ensure that tires, wheels, and the transmission can handle increased power or speed. Visit [atrekrc.com](http://atrekrc.com) for details on upgrades and maintenance tips.

## USER RESPONSIBILITY

- Always run the kit with the body shell in place to protect vital areas from damage. Ensure that the electronics get adequate cooling.
- If you experience problems during use, stop the car immediately and investigate the issue to prevent further damage or potential injury.
- Choose a safe location to run the model, away from potential hazards, people and animals. Inspect the model thoroughly before and after use.
- Use the correct batteries, fuel, glues, paints, chargers, and other materials required to operate and maintain this product. Follow the manufacturer's guidelines for all ancillary products.

## MAINTENANCE IN ADVERSE CONDITIONS

Running your Atrek in adverse conditions may lead to extreme wear or component failure not covered by warranty. Should you choose to run your Atrek in adverse conditions at your own risk, your Atrek will require frequent comprehensive maintenance, which may include disassembly, thorough cleaning, reapplying greases and oils and accelerated replacement of consumable components. Salt water and/or sand should be avoided as it is especially corrosive and abrasive damaging components or rapidly accelerate normal wear and tear, compared to dirt, gravel, or grass. Water in bearings, electronics, radio gear or electronic speed controller can cause critical damage to the components or loss of control, damaging the model.

# WARRANTY INFORMATION

## WARRANTY DETAILS

Atrek operates an extensive testing program on all products to ensure they meet our high standards. We offer up to a 6-month limited warranty\* (from date of purchase), at our discretion, covering defects in parts, materials, workmanship, and assembly. If any defect occurs, we will repair or replace the defective component(s) at our sole discretion. If a defect is found before the product is used, we may choose to exchange the entire product via your retailer, provided it is returned in perfect condition in its original packaging. Your retailer will require a receipt as proof of purchase for any warranty claim.

Atrek does not offer a new-for-old warranty once the product has been used. After use, we offer a component-level limited warranty and will repair or replace the defective component(s) at our discretion.

## WARRANTY EXCLUSIONS

- Damage through inappropriate use.
- Damage through extreme use.
- Crash damage.
- Modifications that have caused component failure.
- Component failure or premature wear resulting from crash damage or extreme use.
- Lack of maintenance, improper maintenance, improper use, or abuse.
- Inappropriate use of the optional high-speed gear.
- Normal wear and tear (e.g., worn-out drive outputs, drive shafts, bearings, gears, slipper pads, brake pads, wheels, tires, etc.)
- Theft or loss.
- Personal injury.

## MAKING A WARRANTY CLAIM

- Contact your retailer or dealer for warranty claims. You will need a copy of your dated sales receipt. Do not send or lose the original receipt.
- Do not return the product to Atrek or your distributor/dealer without prior approval.
- You will be instructed on what to return. In most cases you will be required to return only the damaged component, not the entire product.
- All returns must be accompanied with a completed warranty claim form, available at [atrekrc.com](http://atrekrc.com).

**Note:** If an invalid warranty claim is found, an inspection and handling fee may apply.

- Any repairs resulting from neglect or misuse will be charged (parts and labour) before work commences. In many cases, it is faster and more cost-effective for the user to fit replacement parts, and we reserve the right to request this.

## CUSTOMER SUPPORT

We want you to love using your Atrek vehicle and make owning a high-performance RC model as simple as possible. For help with running, maintaining, tuning, or repairing your Atrek product:

- Visit [atrekrc.com](http://atrekrc.com) for support, parts, and upgrades.
- Email us at [support@atrekrc.com](mailto:support@atrekrc.com) for further assistance.

Atrek, its distributors, or retailers are not responsible for any loss or damage, whether direct, indirect, incidental, or consequential, arising from the use, misuse, or abuse of this product and any accessories or chemicals required to operate it.

Atrek reserves the right to modify the terms of the limited warranty at any time without prior notice.

Copyright © Atrek 2025.



**AtrekRC.com**

Copyright © Atrek 2025