

**ROFUN RACING**

[www.rofunracing.com](http://www.rofunracing.com)



# **Instructions**

**1/5 2-STROKE OFF ROAD RC**

**Baja 5SC**

**Baja 5T**

**Baja 5B**



**RTR** **2-STROKE** **2.4GHZ**



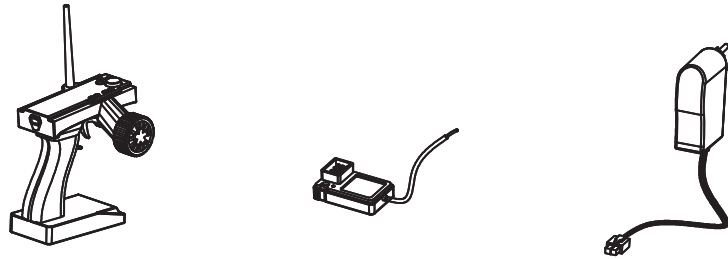




## Packing List

- Assembled RC Vehicle
- Transmitter
- Receiver battery
- Tools & instruction manual
- Charger

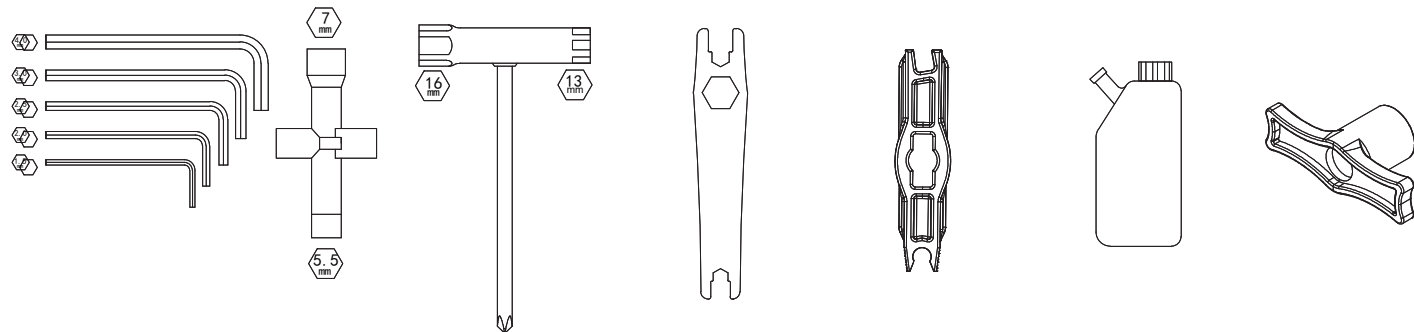
The exact packing list may vary depending on your region and vehicle specifications. If you believe an item is missing, please contact your retailer's customer support.



The transmitter equipment and other spare parts may be updated in future models, potentially differing from the current illustrations.

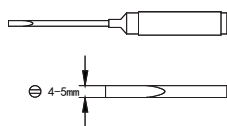
## Included Tools

Allen wrench    Cross wrench    Spark plug wrench    Metal hexagon key    Plastic hexagon key    Mixed fuel ratio can    Wheel wrench

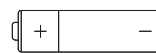


## Required Equipment

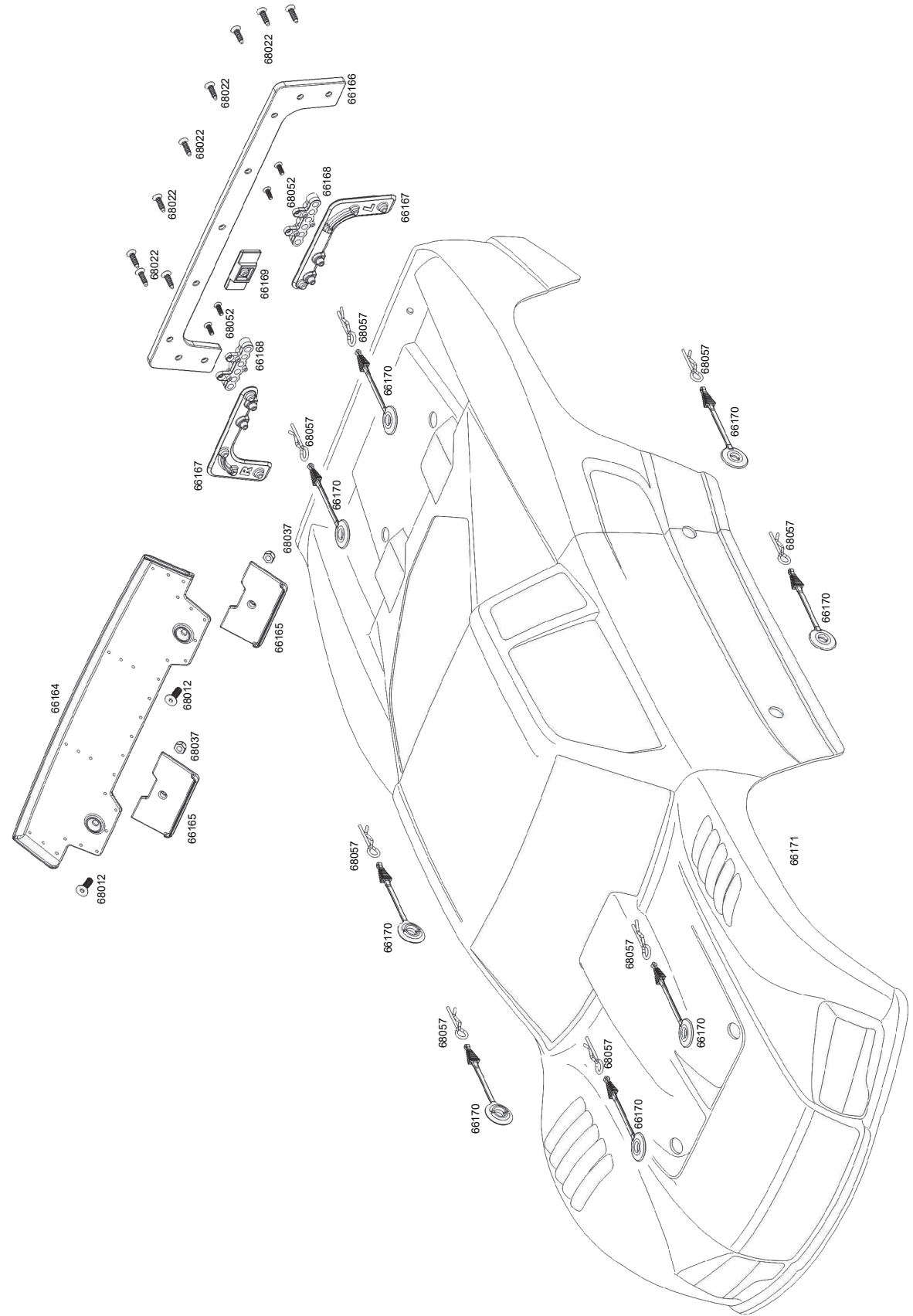
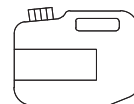
Flat head screwdriver



AA Batteries for controller

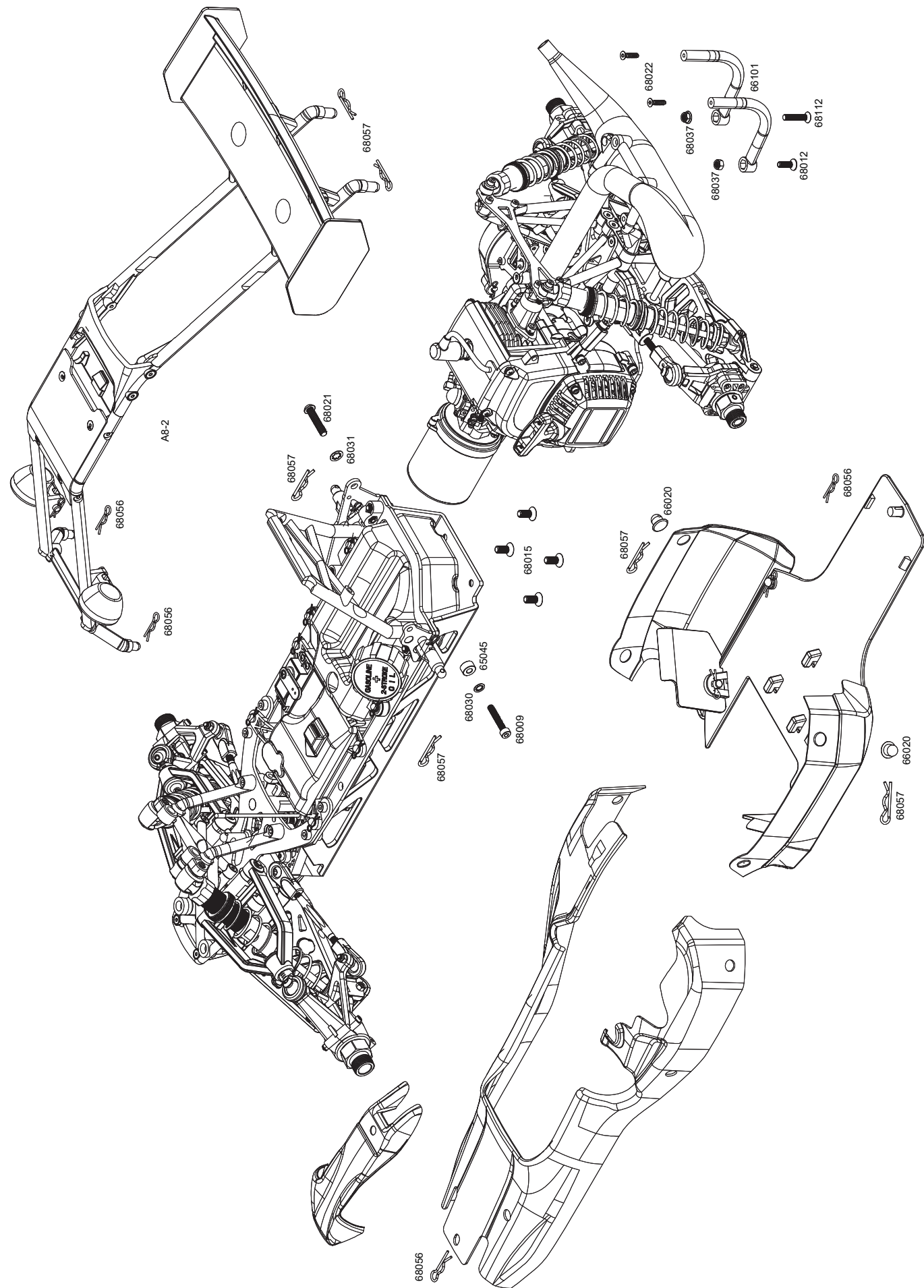


Gasoline (Petrol) & 2-stroke oil









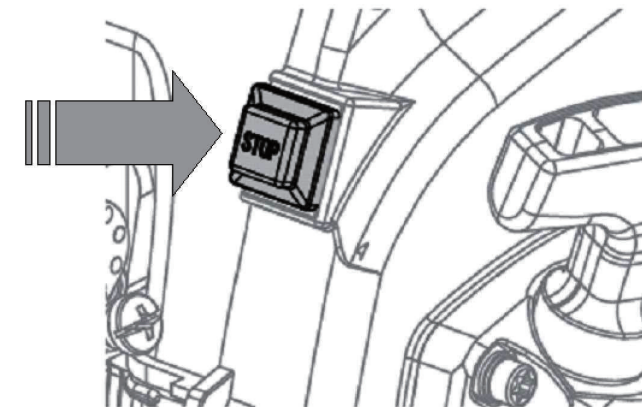
## Engine Break-In

Engine break-in is essential for ensuring longevity and performance. It helps ensure that internal components are properly lubricated, bedded in with one another, and that the engine becomes accustomed to running at temperature and under load. Engine break-in is achieved by gently running a full tank of fuel through the engine, allowing it to cool down regularly during the process.



- Do not adjust the factory carburetor settings, as doing so may damage the engine.
- Do not touch the engine or any surrounding components, such as the exhaust muffler, as they can become extremely hot during use.
- Please do not turn off the transmitter and receiver power before stopping the engine, as this may result in losing control of the vehicle.

Press this engine kill switch to stop the engine



### Power Down Sequence

Engine Off (Press Killswitch)



Receiver Power Off (On Vehicle)



Transmitter Power Off (Hand Controller)

### Engine & Vehicle Maintenance

- After each run, check that the wheel nuts and bolts, especially around the engine, are tight. If any parts are loose, apply a small amount of blue medium-strength thread locker before reinstalling.
- The foam air filter should be cleaned after every run. After cleaning, allow it to dry naturally, then re-oil the inner foam filter with a suitable foam air filter oil. Failure to do so may allow dust and dirt to enter the engine, potentially causing permanent damage.
- The spark plug also requires regular cleaning to remove all carbon deposits from the electrode.
- If you plan not to run the vehicle for a while, empty the gasoline from the fuel tank, start the engine, and let it drain the remaining petrol.





